



DEALER CATALOG



The Smart Choice





What Makes Leisure Concepts The Smart Choice?

- + *One Stop Accessory Source*
 - + *Widest Selection of Stylish Products*
 - + *Superior Quality and Durability*
 - + *Lifetime Dealer Warranty—call for details*
 - + *Same Day Shipping*
 - + *Marketing & Merchandising Support*
 - + *100% Made in the USA*
-

At the center of every product and service is innovative thinking and commitment to quality and customer service. That's why Leisure Concepts is the Smart Choice.



The Leader in Spa Accessories



100% MADE IN THE USA

All Leisure Concepts products are manufactured in Spokane, WA USA.



LARGE INVENTORY

Inventory is always in stock, offering dealers a large selection of quality products to choose from.



SUPERIOR QUALITY

All Leisure Concepts products are made with the finest materials and processes for long lasting performance.



SAME DAY SHIPPING

We can ship your order the day it is placed using the best freight rates available—fast and economical.



TELEPHONE ORDERS

Phone orders can be placed Monday through Friday, 9am–5pm PST. Call us toll free at 800.469.2428 or 509.483.8110.

FAX ORDERS

Fax orders may be placed 24 hours a day at 509.483.8217. Please include the following information on all fax orders: Company name, phone number, shipping and billing addresses and preferred payment method.

PAYMENT

All payment must be in US currency. We accept American Express, Discover, MasterCard, VISA, C.O.D., and prepayment. Minimum dealer order amount is \$100.00.

SAME DAY SHIPPING

Normal shipping is via UPS or common carrier. UPS offers Ground, Next-Day Air, 2nd-Day Air and 3-Day Select Services at very reasonable prices. Common-carrier orders are expedited daily. We are committed to shipping your order the day it is placed with the best freight rates available.

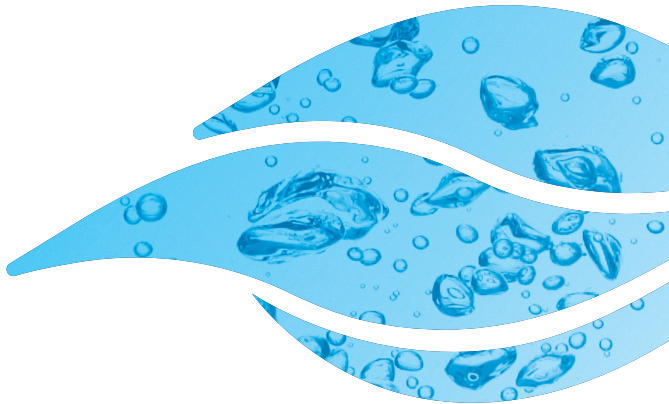
RETURNS

Leisure Concepts will gladly accept product returns provided the item was purchased directly from us. Dealers must obtain a Return Goods Authorization Form (RGA) by calling us at 800.469.2428. All items must be returned in original packaging and a restocking fee of 15% may apply.

WARRANTY

Our products are made of the highest quality materials available, allowing us to offer a full one-year consumer warranty. However, we are so committed to dealer satisfaction that we will gladly honor a lifetime dealer warranty. Call for details.

Product Lines



COVERMATES
& HOLDERS

pages

4-15



STEPS

pages

16-23



SPA
ACCESSORIES

pages

24-31



MARKETING/
SALES TOOLS

pages

32-35



CoverMates

THE TOP-SELLING COVER LIFTS IN THE WORLD

No manufacturer makes better spa cover lifts than Leisure Concepts. The innovation starts with our product designers who envision cover lifts never before seen in the marketplace. Then, our manufacturing team realizes that vision by utilizing the highest quality materials and state-of-the-art processes. The results are cover lifts that are stylish, easy to install, fit most spas and exceed consumer and dealer expectations—without exceeding their budgets.







Comes standard
with a TowelMate

With a Euro-styled
composite bracket, our
CoverMate I outsells every
other lifter in the industry

Patent No.5,996,137

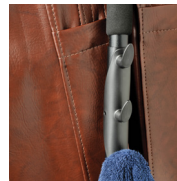
CoverMate I

THE MOST RECOGNIZED LIFT IN THE INDUSTRY

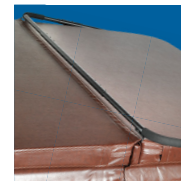
Step up your cover lift offering with the CoverMate I. This is simply the highest quality and most sold cover lift on the market. Its time-tested performance, attractive appearance and obvious quality are apparent to everyone desiring a no-hassle cover lift. Enjoy great customer satisfaction with the CoverMate I.

FEATURES & SPECS

- + Requires just 10 to 15 inches of clearance behind the spa and 5 inches on each side
- + Available with specialty brackets that are designed specifically for certain spa brands
- + Available with extended pivot arms or extended coupler bar for spas over 8 feet in length or width
- + Available with extended brackets for spas with a corner radius larger than 12 inches
- + Powder-coated, aluminum tubing with easy-to-install, non-corrosive composite brackets
- + Comes standard with a TowelMate accessory for hanging up to three towels right where they are needed most
- + Attractive marketing display available



TOWELMATE AND
FOAM GRIPS



CLOSED POSITION



CoverMate I Eco

PERFORMANCE AND PRICE: CHOOSE BOTH

Want to offer a more economical cover lift without sacrificing quality? Look to the CoverMate I Eco. This lift offers features similar to the industry-leading CoverMate I, but allows for a lower sale price. Quality and value come together in the CoverMate I Eco.

FEATURES & SPECS

- + Requires just 10 to 15 inches of clearance behind the spa and 5 inches on each side
- + Full-length middle crossbar
- + Powder-coated, aluminum tubing with easy-to-install, non-corrosive brackets
- + Works on spas up to 8 feet in length or width



CLOSED POSITION

Patent No.5,996,137



CoverMate II & II Understyle

OUT-OF-SIGHT PEACE OF MIND

These models allow the open cover to rest in a lower position for a slightly less-obstructed view. With two mounting systems to choose from, the CoverMate II can be screw-mounted low on the spa, or simply slid underneath for spas with weaker skirts using the Understyle bracket system.

FEATURES & SPECS

- + Requires just 18 inches of clearance behind the spa and 5 inches on each side
- + Powder-coated, aluminum tubing with easy-to-install, non-corrosive mounting brackets
- + Understyle system uses two aluminum brackets and 7-inch base plates that simply slide under the spa
- + Comes standard with a TowelMate accessory for hanging up to three towels right where they are needed most
- + Works on spas up to 8 feet in length or width and 40 inches in height



CLOSED POSITION



TOWELMATE AND
FOAM GRIPS



UNDERSTYLE
BRACKET SYSTEM
SOLD SEPARATELY



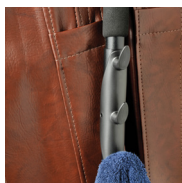
CoverMate Easy

SUPERIOR, STYLISH SIMPLICITY

With no moving parts, the CoverMate Easy is a perfect example of "form follows function". This traditional cover lift offers ease-of-use and performance features your customers will love.

FEATURES & SPECS

- + Requires just 18 inches of clearance behind the spa and 5 inches on each side
- + Powder-coated, aluminum tubing with easy-to-install, non-corrosive mounting brackets
- + Durable, corrosion-free nylon catch straps provide a more stylish look, as compared to chains
- + Comes standard with a TowelMate accessory for hanging up to three towels right where they are needed most
- + Works on spas up to 8 feet in length or width



TOWELMATE AND
FOAM GRIPS



CLOSED POSITION

Nylon catch strap is durable and corrosion-free



CoverMate III

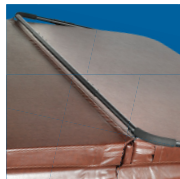
THE PERFECT ANSWER WHEN CLEARANCE BEHIND THE SPA IS AN ISSUE

No other hydraulic cover lift offers the beauty, reliability and superior operation of the CoverMate III. Combine that with an aluminum full-frame construction and our stylish composite mounting brackets, and you've given your customers a perfect option with no heavy lifting.

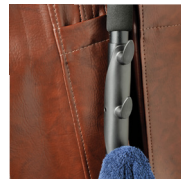
FEATURES & SPECS

- + Requires just 6 inches of clearance behind the spa and 5 inches on each side
- + Powder-coated, aluminum tubing with easy-to-install, non-corrosive mounting brackets
- + Ergonomically designed for ease of use
- + Locking shock prevents unintentional closure
- + Available with extended pivot arms or extended coupler bar for spas over 8 feet in length or width
- + Available with optional DeckMount bracket system for use with recessed spas sold separately
- + Available with extended brackets for spas with a corner radius larger than 12 inches
- + Comes standard with a TowelMate accessory for hanging up to three towels right where they are needed most

Euro-styled composite bracket with beauty covers that hide mounting hardware for a clean look



CLOSED POSITION



TOWELMATE AND FOAM GRIPS



CoverMate III Eco

EASY LIFTING THAT'S EASY ON THE WALLET

For customers wanting a lower-cost hydraulic-assisted cover lift, the CoverMate III Eco is a perfect option. Built with aluminum brackets rather than the composite brackets of the premier CoverMate III, the Eco version delivers impressive performance without sacrificing quality. Value comes standard with the CoverMate III Eco.

FEATURES & SPECS

- + Requires just 6 inches of clearance behind the spa and 5 inches on each side
- + Full-length middle crossbar
- + Powder-coated, aluminum tubing with easy-to-install, non-corrosive mounting brackets
- + Works on spas up to 8 feet in length or width
- + Locking shock prevents unintentional closure
- + Available with extended brackets for spas with a corner radius larger than 12 inches



ALUMINUM MOUNTING BRACKETS



CLOSED POSITION





CoverMate Vanish XL

EASY HANDLING AND A LOW-PROFILE VIEW

Add this unique lifter to your product lineup and have all the bases covered for your customer needs. Part of our Next Generation Series, the exclusive design of the CoverMate Vanish XL drops the cover into a low position behind the spa allowing a 360-degree view. The side-positioned, cover mounting brackets eliminates racking and allows effortless opening and closing that is velvet-smooth. The CoverMate Vanish XL is in a class of its own in design, quality, and function, making it a MUST for every showroom.

FEATURES & SPECS

- + Requires just 25 inches of clearance behind the spa and 5 inches on each side
- + Low-profile positioning provides a near zero-obstructed view
- + Exclusive design creates a clean look by eliminating the need for a middle cross bar
- + Strong, glass-reinforced nylon cabinet brackets with easy-to-install, powder-coated aluminum cover brackets prevent corrosion
- + Ideal for spas up to ten feet
- + Hydraulic shocks provide effortless opening and closing
- + Zero racking allows smooth, fluid opening and closing of the spa cover
- + Quick and easy installation



CoverMate Vanish XLR and XLR-P are available for raised back spas such as the Jacuzzi 400 series and similar.

Patent No. 9,574,361

*Additional clearance required.



CLOSED POSITION

Attaches to the cover using an internal mounting plate included with the cover lifter



CoverMate Zero

THE COVER LIFT THAT OUTPERFORMS ALL OTHERS

The CoverMate Zero's compact design and ease of use separates it from all other cover lifts. Part of our Next Generation series of lifts, the unique design prevents racking while the hydraulic shocks allow the cover to effortlessly glide into the open and closed position, making the CoverMate Zero the cover lift your customers can't say no to!

FEATURES & SPECS

- + Requires just 6 inches of clearance behind the spa and 5 inches on each side
- + Zero racking allows smooth and fluid movement while opening and closing the cover
- + Exclusive design creates a clean look by eliminating the need for a middle crossbar
- + Locking shock prevents accidental closing of the spa cover
- + Powder-coated aluminum components with easy-to-install non-corrosive mounting brackets
- + Ideal for spas up to 10 feet
- + Quick and easy installation



CLOSED POSITION

CoverMate Zero-R is available for raised-back spas such as the Jacuzzi 400 series and similar

Attaches to the cover using an internal mounting plate supplied with the cover lifter





CoverMate Freestyle

THE COVER LIFT SOLUTION FOR ROUND

AND UNIQUELY SHAPED SPAS

Thanks to our exclusive, adjustable mounting base that slides beneath the spa, the CoverMate Freestyle delivers when other lifts can't.

FEATURES & SPECS

- + Requires approximately 20 inches of clearance behind the spa
- + Designed to work on round and uniquely shaped spas
- + Adjustable mounting base simply slides under the spa
- + Works on nearly any spa between 26 to 42 inches tall and 74 to 95 inches wide
- + Powder-coated, aluminum tubing with easy-to-install non-corrosive mounting brackets

Patent No. 6,842,917



ADJUSTABLE MOUNTING BASE



FOAM GRIPS





CoverCatch

THE SIMPLE SOLUTION TO COVER STORAGE

The CoverCatch is the perfect answer for keeping the cover close-by and off the ground. Install the arms low on the spa for an unobstructed view, or higher for added privacy. Ideal for the smaller sized spa and cover.

FEATURES & SPECS

- + Requires just 10 inches of clearance behind the spa
- + Arms fold flat against the spa when not in use
- + Powder-coated, aluminum tubing with easy-to-install, non-corrosive mounting brackets
- + Works well on most smaller spas regardless of shape
- + Foam-rubber pads provide soft, slip-free surface for the cover to rest on
- + Arms measure 7 1/2" deep



SIMPLE INSTALLATION

CoverShelf

REMOVE THE COVER WITHOUT REMOVING THE VIEW

It's hard to imagine a more simple or effective method of cover removal and storage than the CoverShelf. Simply fold the cover in half and slide it onto the sturdy aluminum bars, where it can rest securely without obstructing the view.

FEATURES & SPECS

- + Shelf arms fold flat against the spa when not in use
- + Powder-coated, aluminum tubing with easy-to-install non-corrosive mounting brackets
- + Works well on most unconventional shaped spas
- + 5-minute installation
- + Arms are 32 inches long from the bend with a 2-inch diameter



ARMS FOLD FLAT WHEN NOT IN USE



COVER RESTS ON TOP OF ARMS



Spa Steps

RISE TO THE OCCASION

Nothing hinders a spa experience more than having to climb in and out over the side. Leisure Concepts eliminates that leap with the highest quality, most attractive steps in the industry. Safety, security and great looks come standard, along with a lifetime dealer warranty. Step up to the best. Step up to Leisure Concepts.







Strong molded plastic construction provides a sturdy, safe step. Tested up to 700 lbs.

**Patent No. 8,181,739
and No. D550,374 S**

DuraStep II

THE BEST ENTRY-LEVEL STEP IN THE INDUSTRY

The DuraStep II delivers the best entry-level price point with features beyond its price tag such as stylish design, strong construction and easy assembly.

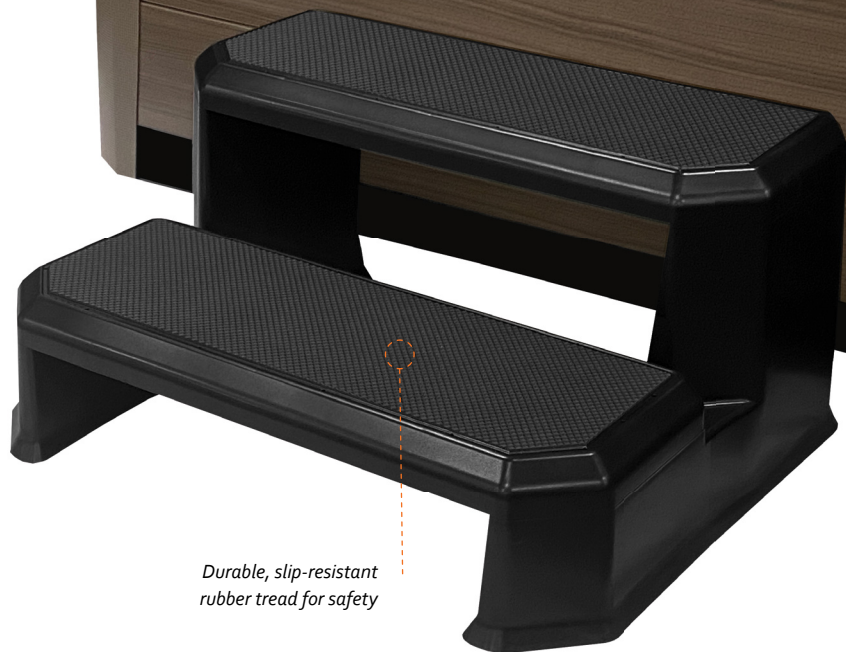
FEATURES & SPECS

- + Large, slip-resistant tread for safety
- + Locks together in seconds
- + Strong, stable and attractive
- + Our unique patented reversible tread design can accommodate round or square spas
- + Available in black only
- + 15" H x 27" W x 26" D



Increase your profits by offering the optional SmartDrawer

Shown with a SmartStep



Durable, slip-resistant rubber tread for safety

Evo

KEEP IN STEP WITH TODAY'S MODERN DESIGN

Tradition and performance together in a contemporary design that complements the sophistication of today's spa designs. Add an optional SmartDrawer to have everything you need to maintain your spa in one convenient location.

FEATURES & SPECS

- + *Slip-resistant rubber treads are safe and soft to the feet*
- + *Securely snaps together in seconds—no tools required*
- + *Strong and sturdy*
- + *Sophisticated and contemporary design*
- + *Optional Smartdrawer available for added convenience*
- + *16 ¼" H x 34" W x 27" D*



For color representation only. Not actual product.

MATCH OR ACCENT ANY SPA WITH ONE OF THESE POPULAR COLORS

All colors are computer matched to top brands such as Hot Spring, Caldera, Sundance, Jacuzzi, Bullfrog and many other spa skirts.



Wide 36" tread with a weight capacity of more than 700 lbs



Patent No. 8,181,739 and No. D550,374 S

MATCH OR ACCENT ANY SPA WITH ONE OF THESE POPULAR COLORS

All colors are computer matched to top brands such as Hot Spring, Caldera, Sundance, Jacuzzi, Bullfrog and many other spa brands.



Increase your profits by offering the optional SmartDrawer

SmartStep

SLEEK STYLE WITH A HIGHER PERCEIVED VALUE

With a wide tread and a weight capacity of more than 700 pounds, SmartStep is the "best of the best" for square and round spas alike. SmartDrawers can be added for storage of spa chemicals, cleaning products and more. Convenient, strong and stylish – that's SmartStep.

FEATURES & SPECS

- + Slip-resistant rubber tread is safe and soft to the feet
- + Securely snaps together in seconds—no tools required
- + Our unique patented reversible tread design can accommodate round or square spas
- + Convenient SmartDrawers sold separately
- + 16 ¼" H x 36" W x 28" D



SmartStep Jr

PERFECT FOR LOW-PROFILE OR PARTIALLY RECESSED SPAS

The single step version of our wildly popular SmartStep features the same solid strength and rigidity as its bigger brother, despite its shorter size.

FEATURES & SPECS

- + Slip-resistant rubber tread is safe and soft to the feet
- + No assembly required
- + Our unique patented reversible tread design can accommodate round or square spas
- + Includes a single SmartDrawer
- + Available in black only
- + 8" H x 36" W x 13" D



*Patent No.8,181,739
and No.D550,374 S*



*Comes standard with
the SmartDrawer*



ModStep

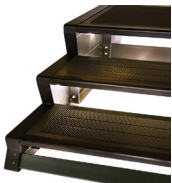
MODULAR, EXPANDABLE STEP SERIES

The ModStep is an expandable series of steps that is unlike any other in the industry. The ModStep components can be custom configured to suit most situations. By adding two or more components together, you now have the flexibility to create a long run of steps or a custom swim spa step that accommodates most cabinet heights or lengths.

FEATURES & SPECS

- + Sizeable 35-inch-wide treads with slip-resistant rubber pads for added safety
- + Non-corrosive, powder-coated aluminum frame with polymer treads
- + Tested to support up to 800 lbs
- + Quick and easy assembly
- + Available in black to match any spa cabinet color
- + ModStep 2XL — the only step in the industry that offers a wide 24" x 35" landing platform that provides the user a larger, safer platform when entering & exiting the spa

OPTIONAL FEATURES:

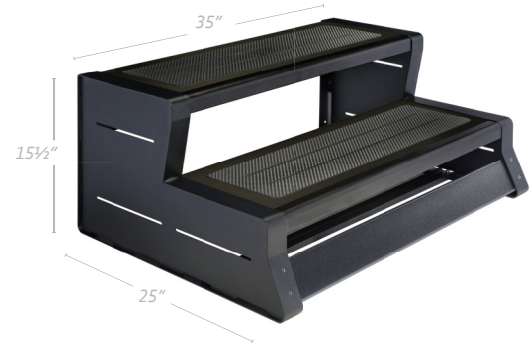


SOLAR LIGHT

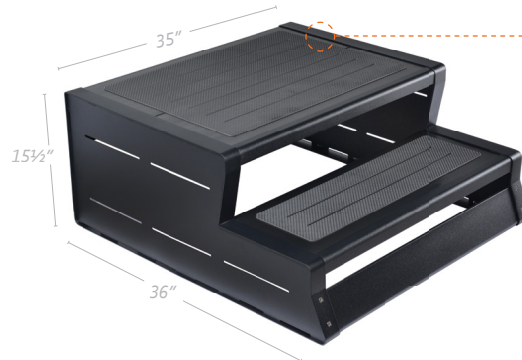


MODSTEP DRAWER

ModStep 2



ModStep 2XL



Double tread platform for a larger, safer surface area

Optional Safe-T-Rail package is available for the ModStep 2 and ModStep 2XL





ModStep 3



ModStep 4



Safety rail can be configured to allow for front or side entry. Each rail is sold separately

Double tread platform for a larger, safer surface area

*All measurements have been rounded up to the nearest whole number

How the ModStep System Works



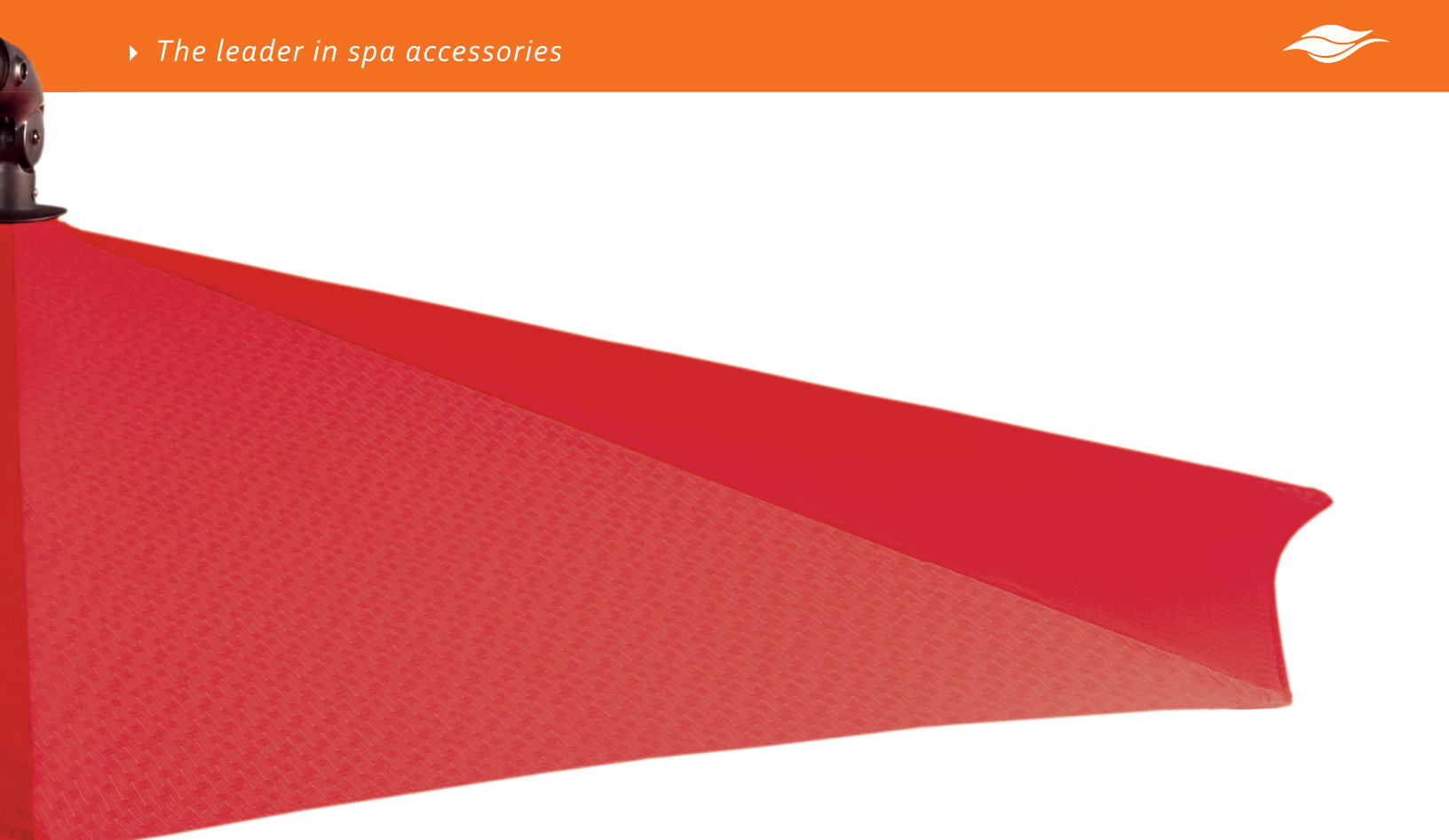
Combine ModStep 2 with the ModStep 3 or 4 tier component to create a swim spa step

Combine two or more steps together to create a wider step

Expanded ModStep 4







Spa Accessories

HAVING A SPA IS ONLY PART OF THE EXPERIENCE

To truly appreciate the luxury of spa ownership, accessories are mandatory. They also provide dealers with ongoing sales opportunities to existing customers. Leisure Concepts offers a complete line of spa accessories that will enhance dealer showrooms as well as sales figures. They all come with our exclusive warranty and industry-leading dealer support.



sunbrella®



CAMEL



CRIMSON



GRAPHITE



NAVY



Easy tilting and 360° rotation

Central LED light comes equipped with two rechargeable battery packs

Custom designed for hot tub use and opens up for more storage

SpaUmbrella

YOUR CUSTOMERS ARE COVERED - RAIN OR SHINE

This elegant, European-designed umbrella lets customers enjoy their spas regardless of the elements. Powder-coated 2 1/4-inch, non-corrosive aluminum tube construction and premium Sunbrella material make this umbrella both durable and stylish. Finally, an umbrella that performs the way your customers expect.

FEATURES & SPECS

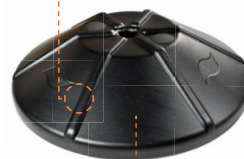
- + 9 foot coverage area
- + 8'4" height with a 2-inch diameter pole
- + Easy assembly with all parts that are fully repairable and replaceable
- + Sunbrella® canopy is easily removed for cleaning
- + Two different bases to choose from
- + Spa base with storage measures 20 1/2" H x 24" L x 12 1/2" W with a 10" kickplate
- + Freestanding base measures 32" in diameter



CRANK HANDLE FOR SIMPLE, ONE-HAND OPERATION



LED LIGHT WITH FOUR LEVELS OF BRIGHTNESS



Perfect for use in multiple locations

▲ SPA BASE WITH STORAGE or FREESTANDING BASE ▶



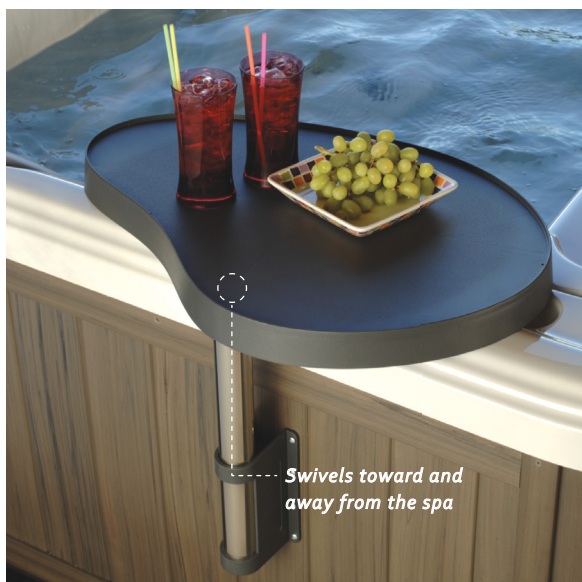
SpaCaddy

A HANDY, SAFE PLACE TO PUT CELL PHONES, BEVERAGES AND MORE

Sturdy and versatile, the SpaCaddy is a perfect solution to an age-old problem for spa users. Now, all of the essentials – from food and drinks to reading materials and more – can be placed within easy reach. Makes a great gift for spa lovers!

FEATURES & SPECS

- + Sturdy reinforced polymer tray on an aluminum post
- + Swivels toward and away from the spa for easy access
- + Uses one composite mounting bracket with eight screws
- + 27" L x 19" W with a 2-inch diameter pole
- + Quickly mounts on almost any spa
- + Attractive marketing display available



SmartBar

CONVENIENT AND SECURE STORAGE JUST OVER THE EDGE

The SmartBar comes standard with our SmartDrawer for convenient, secure storage. The SmartBar features a slip-resistant surface to keep valuables from shifting. Drinks, phones, glasses and other important items will be within arms reach with the SmartBar.

FEATURES & SPECS

- + Installs quickly with two mounting brackets
- + 39" L x 14" W
- + Designed for removable or permanent placement
- + Attractive marketing display available



Safe-T-Rail

GET A GRIP ON ONE OF THE BEST SPA ACCESSORIES AVAILABLE

The combination of water and slippery surfaces makes every spa a potential hazard. That's why we invented the Safe-T-Rail. We believe this product has more upside sales potential than any other product we offer. Don't let a single customer— young or old—leave your showroom without considering a Safe-T-Rail for their spa.

FEATURES & SPECS

- + Ultra-sturdy design
- + Slip-free foam grip for comfort and safety
- + 5-minute installation — Two composite mounting brackets with eight screws each
- + Mounts on most above-ground spas
- + Made with rust-free, powder-coated aluminum
- + 48" H with a 2-inch diameter pole
- + Attractive marketing display available



Slip-free foam grip for comfort and safety

Safe-T-Rail II

THE BEST HAND RAIL ON THE MARKET WHEN AN ALTERNATIVE TO CABINET MOUNTING IS DESIRED

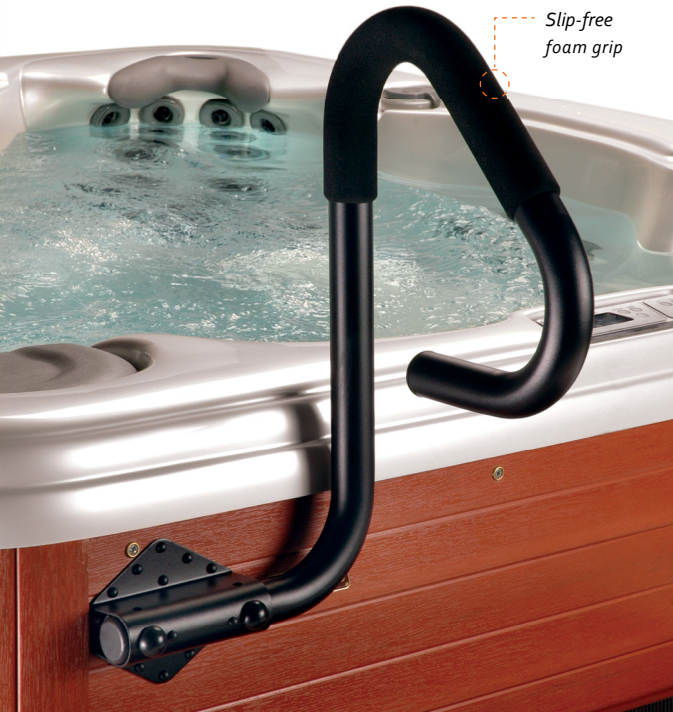
Offering the same great look and performance as the Safe-T-Rail, but equipped with its own built-in, slide-under-the-spa stand, making installation and display a snap.

FEATURES & SPECS

- + Ultra-sturdy design
- + Slip-free foam grip for comfort and safety
- + Works with most above-ground spas
- + 5-minute installation — optional foam bumper bracket included - no hardware installed in cabinet
- + Made with rust-free, powder-coated aluminum
- + 48" H with a 2-inch diameter pole
- + Base measures 21" L x 12" W with a 16 ½" kickplate

Slip-free foam grip for comfort and safety





BRACKET ROTATES FOR EASY DECK MOUNTING

SmartRail

THE HAND RAIL THAT EVEN WORKS ON RECESSED SPAS

Regardless of a spa's configuration, SmartRail makes entry and exit much safer. A rotating mounting bracket accommodates recessed spas as well as freestanding units. No spa should be without this important safety and convenience accessory.

FEATURES & SPECS

- + Rust-free powder-coated aluminum
- + Slip-free foam grip for comfort and safety
- + Single, corrosion-free rotating bracket with 12 screws
- + 10-minute installation
- + Mounts on most spas
- + 26" H with a 2-inch diameter pole

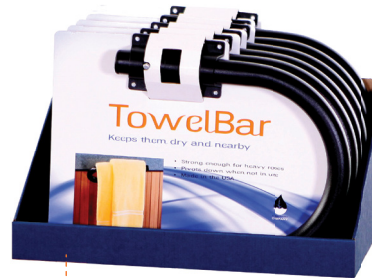
TowelBar

THE SMART, CONVENIENT WAY TO KEEP TOWELS CLOSE, CLEAN AND DRY

TowelBar is one of those deceptively simple products that makes all the difference in spa convenience. It holds towels a short distance away from splashing water and steam and conveniently folds flat against the spa side when not in use.

FEATURES & SPECS

- + Folds flat or opens away from the spa to keep towels dry
- + 5-minute installation
- + 16" length x 7 1/2" depth



FREE counter display with every case purchased



▶ *The leader in spa accessories*



Unique, interlocking modular design lets the customer choose the size and configuration that is perfect for their environment

*Patent No.8,205,407
and No.D646,800*

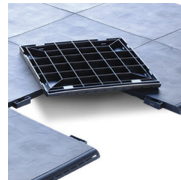
Exclusive optional bullnose edging provides customers a clean and attractive appearance



OPTIONAL BULLNOSE
EDGING



STRUCTURAL
COMPOSITE RIBBING



UNDERSIDE



EXPANSION PACK

SmartDeck

THE SIMPLE, YET VERSATILE SPA PAD SOLUTION

The innovative SmartDeck patio system provides a perfect solution to the problem of establishing a flat and level spa surface. Each panel locks together allowing the creation of small or large decks if desired. Textured surface and black color add to the deck's elegant appeal. The SmartDeck should be offered with every hot tub sale. Don't give away your profits to the concrete guy!

FEATURES & SPECS

- + Structural composite ribbing supports spa weight and more
- + Modular component design allows for endless configurations
- + Smart alternative to cement or wood deck construction
- + Sixteen 24" square by 1 ½" H panels per box allows for easy shipping and handling
- + Great for permanent or temporary use
- + Supports up to 300 lbs. per square foot (accommodates swim spas)

EXPANSION PACK AVAILABLE

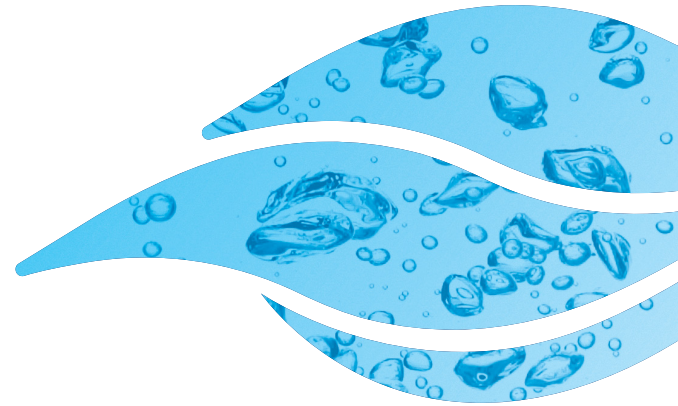
- + Four 24-inch square panels per expansion pack (2 expansion packs per case)



SmarTools/Marketing

STYLISH, EFFECTIVE MERCHANDISING SOLUTIONS FOR EVERY SHOWROOM

At Leisure Concepts, our commitment doesn't stop at developing the most innovative and durable spa accessories on the market. We've also developed some of the most innovative packaging, merchandising and dealer support tools in the industry.



Marketing/Sales Tools



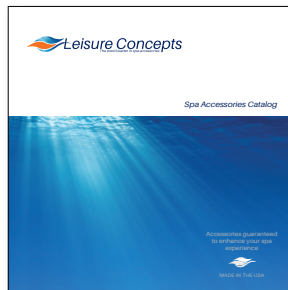
PACKAGING

Designed for display, our packaging features an exciting look to help increase your sales.



SMARTBAR STAND

The SmartBar Stand allows you to properly show the SmartBar without drilling into the side of your display spa.



CONSUMER BROCHURE

Designed as a takeaway for your customers, this brochure is sure to increase your spa accessory sales.



SPACADDY

This two-part display can be placed on the front counter or next to the front door for impulse purchases.



P.O.P. SIGN KIT

Includes multiple product signs: CoverMate, DuraStep, Safe-T-Rail, Spa Umbrella, SpaCaddy, SmartStep, SmartDeck and more. Let these signs tell your customers about these NECESSARIES!



COVERMATE I

A 4-unit merchandising display with 4-color header card. Place near your chemical area where return customers shop.



TOWELBAR

FREE counter display with every case ordered. Compact enough for the front counter to encourage impulse sales.



SAFE-T-RAIL

A 4-unit merchandising display constructed of powder-coated aluminum. The built-in demo product makes this display an eye-catcher in any high-traffic area. Safe-T-Rail sold separately.



Call to order: 800.469.2428

Leisure Concepts feels it is extremely important to give worldwide green efforts a lift by being environmentally sensitive any way we can. We do our part by reusing plastic waste byproducts and using only eco-friendly liquids during production. Leisure Concepts products are proudly manufactured in the USA in Spokane, WA.

*Protected and licensed under U.S.
Patent numbers: CoverMate I US
5,996,137; CoverMate Freestyle US
6,842,917; SmartStep US 8,181,739
and D550,374 S; SmartDeck US
8,205,407 and D646,800; CoverMate
Vanish XL US 9,574,361*





The Smart Choice

- ▶ leisureconcepts.com
- ▶ info@leisureconcepts.com
- ▶ 5342 n. florida street
spokane, wa 99217 usa
- ▶ 509.483.8110
- ▶ 800.469.2428 *toll free*
- ▶ 509.483.8217 *fax*



A GREEN-FRIENDLY
COMPANY



MADE IN THE USA

o80122Vo1

Call to order: 800.469.2428

The Smart Choice